

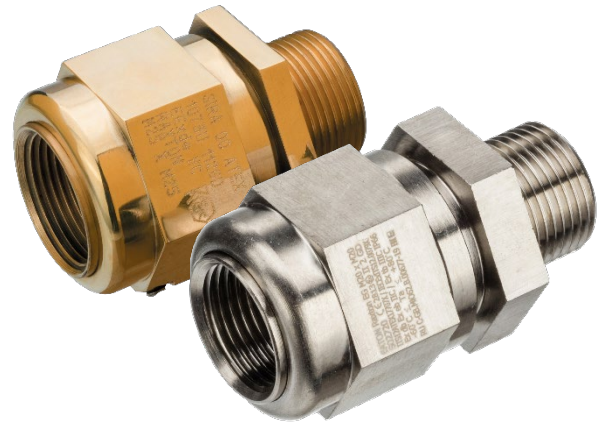
Barrier stopper boxes – EG

Technical specification

The barrier stopper box is designed to seal conductors at the entry to the enclosure via conduit or to enable an existing compression gland to be converted to a barrier gland.

This is achieved by forming a barrier between the individual insulated conductors within the cable to prevent an explosion within the enclosure. The compound stopper box allows compound to be packed around individual insulated conductors. Assembly of the component compresses the packing material and distributes the compound evenly to effect a barrier at point of entry into the enclosure.

The barrier stopper box is available in male to female (type EG). The product is supplied with compound in a pack, complete with making off instructions and gloves.



Type EG

Certifications and compliances



Code of protection categories

ATEX / IECEx: II 2 GD, Ex d IIC Gb, Ex e IIC Gb, Ex tb IIIC Db

EAC: Ex d IIC Gb / Ex e IIC Gb, Ex tb IIIC Db

Compliance standards

ATEX / IECEx: EN/IEC 60079-0, EN/IEC 60079-1, EN/IEC 60079-7,
EAC: EN/IEC 60079-31

Certificate details

ATEX: ITS 12ATEX17707X

IECEx: IECEx ITS 12.0079X

EAC: TC RUC-G B.MO62.B.00677/19

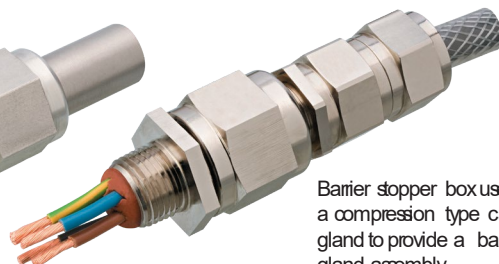
Temperature

Temperature range: $-60^{\circ}\text{C} \leq T_a \leq 80^{\circ}\text{C}$

Barrier stopper box
used with a rigid steel
conduit.



Barrier stopper box used with
a compression type cable
gland to provide a barrier
gland assembly.



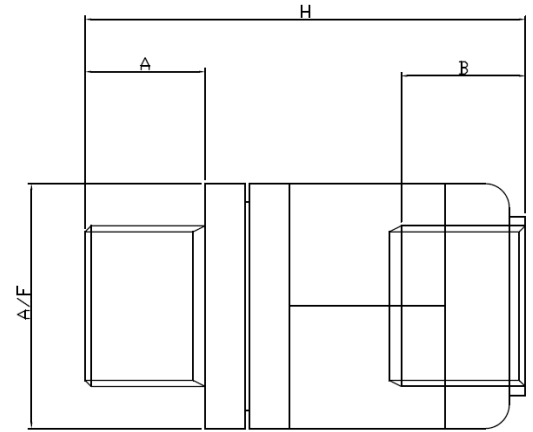
Barrier stopper boxes – EG

Dimensions

Other sizes / threads are available upon request.

METRIC 1.5 PITCH				
Size	Thread A	Thread B	Length H	A/F
M16	15.0	15.0	58.7	25.6
M20	15.0	15.0	61.2	30.5
M25	15.0	15.0	64.1	37.6
M32	15.0	15.0	69.1	47.2
M40	17.0	15.0	76.0	55.9
M50	17.0	15.0	73.5	70.0
M63	17.0	15.0	76.2	85.0

NPT				
Size	Thread A min	Thread B min	Length H	A/F
3/8"	15.5	15.0	59.2	27.9
1/2"	20.2	17.0	66.4	33.0
3/4"	20.5	17.0	69.6	41.1
1"	25.3	22.0	85.0	50.0
1. 1/4"	26.0	22.5	90.3	60.0
1. 1/2"	26.5	23.0	89.0	70.0
2"	27.2	24.0	93.4	85.0



Barrier stopper boxes – Product coding

DIGIT 1+2		CODE
Product	Description	
STOPPER BOX	M-F HEX	EG

DIGIT 3	CODE
MATERIAL	
BRASS	A
ALUMINUM	B
STEEL	C
STAINLESS STEEL	E

DIGIT 4+5 (Male thread)						DIGIT 6+7 (Female thread)							
THREAD REFERENCE TABLE													
ISOMETRIC		NPT		BSPT		BSPP		NPSM		PG		ET	
SIZE	CODE	SIZE	CODE	SIZE	CODE	SIZE	CODE	SIZE	CODE	SIZE	CODE	SIZE	CODE
M16	11	½"	42	½"	52	½"	62	½"	72	PG7	20	¾"	31
M20	12	¾"	43	¾"	53	¾"	63	¾"	73	PG9	21	¾"	32
M22	07	1"	44	1"	54	1"	64	1"	74	PG11	22	1"	33
M24	08	1¼"	45	1¼"	55	1¼"	65	1¼"	75	PG13,5	23	1¼"	34
M25	13	1½"	46	1½"	56	1½"	66	1½"	76	PG16	24	1½"	35
M28	09	2"	47	2"	57	2"	67	2"	77	PG21	25	2"	36
M32	14	SPECIAL	40	SPECIAL	50	SPECIAL	60	SPECIAL	70	PG29	26	2½"	37
M38	05									PG36	27		
M40	15									PG42	28		
M50	16									PG48	29		
M63	17												

SPECIAL	10

DIGIT 8 (APPROVAL)	CODE
Exd/Exe	Y
None	F

DIGIT 9 (Undercut)	CODE
Yes	U
None	X or Blank

DIGIT 10 (PLATING)	CODE
None	Blank
Nickel	N
Zinc	Z

NOTE: Male thread is always quoted First (Digit 4+5) followed by the Female thread (Digit 6+7)
 Other threads are available, please consult the sales department
 Digit 8 Approval
 Digit 9: U = Undercut Otherwise Blank or use X if Plating is required
 Digit 10 (Plating) is Blank if no plating is required

EXAMPLES							
Product	Material	Male thread	Female thread	Approval	Undercut	Plating	
STOPPER BOX	Brass	½" NPT	M20	Exd/Exe	None	Nickel	Part Number
EG	A	42	12	Y	Blank	N	EGA4212YN
STOPPER BOX	Stainless	M32	1"NPT	Exd/Exe	Yes	None	Part Number
EG	E	14	44	Y	U	Blank	EGE1444YU